

Check calculations



1 Draw counters to represent each calculation.

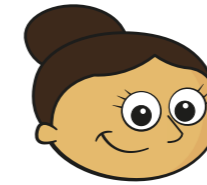
a) $13 + 3 = 16$

b) $4 + 9 = 13$

c) $15 - 1 = 14$

d) $20 - 12 = 8$

2 A bag of sweets has 8 red sweets and 3 yellow sweets.



There are 12 sweets altogether.

Is Dora correct? _____

Draw a picture to show how you know.

3 Circle the calculations that can be used to check $14 + 3 = 17$

$14 - 3$

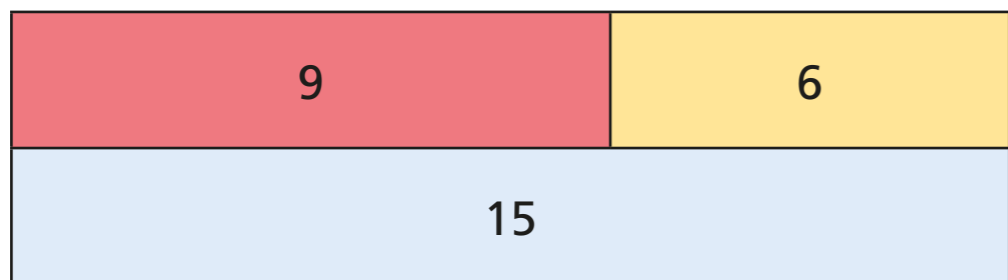
$17 - 3$

$3 - 14$

$17 - 14$



4 Use inverse operations to check $9 + 6 = 15$



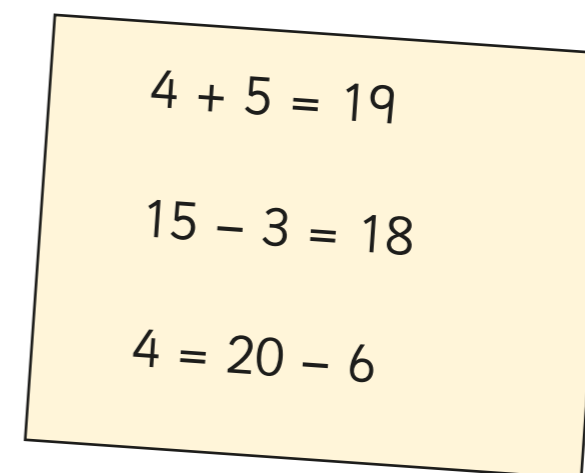
	-		=	
	-		=	

5 Is this true or false?

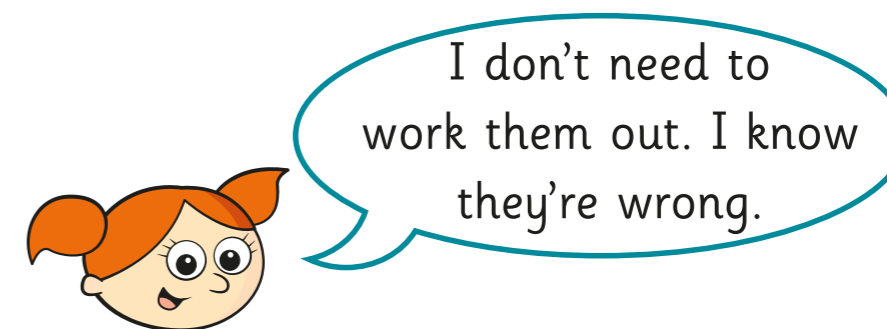
$$18 - 4 = 14$$

Explain how you know.

6 Jack is answering some maths questions.



Alex is checking Jack's workings.



How does Alex know this?
